

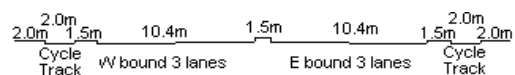
YEAR 2013

CORE STATION 5019

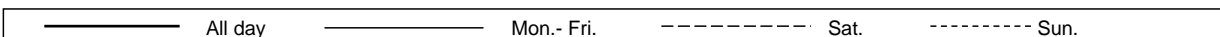
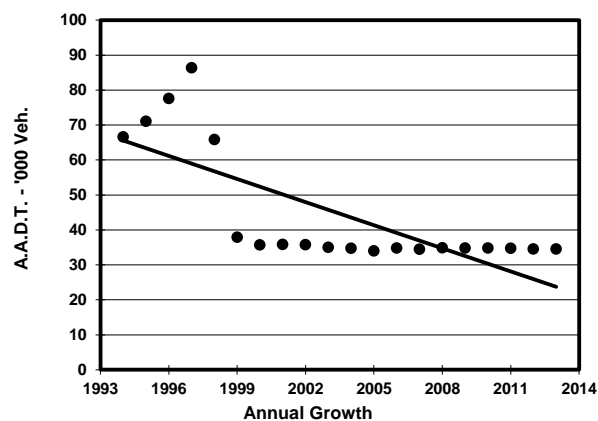
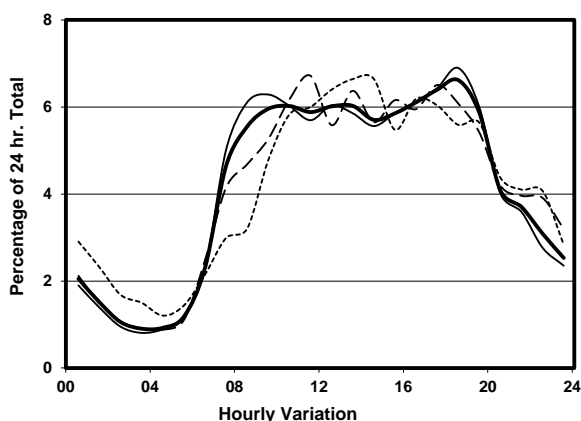
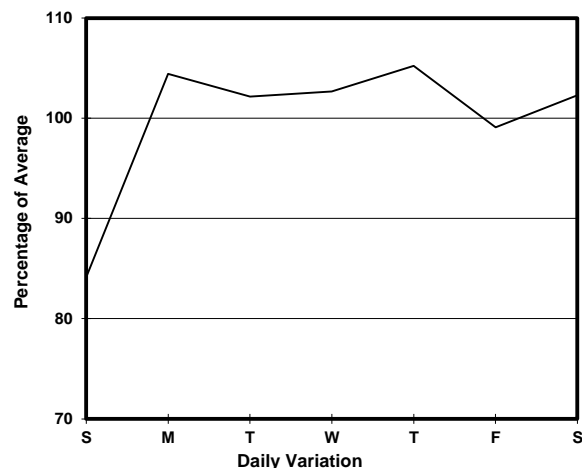
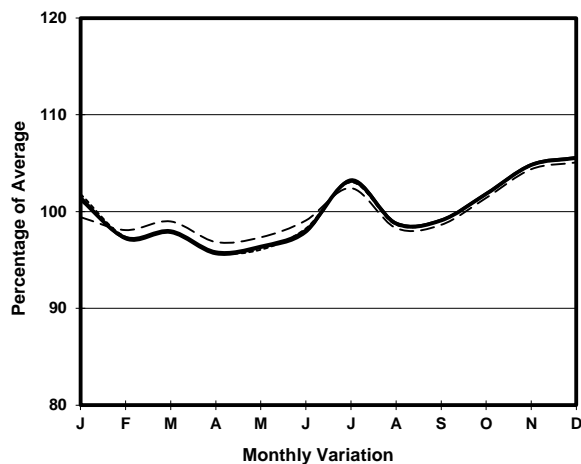
ROAD NETWORK MAJOR

ROAD TYPE RURAL TRUNK ROAD

LINK CASTLE PEAK RD - YUEN LONG (from YUEN LONG ON LOK RD to KAM TIN RD)



## 1. TRAFFIC FLOW VARIATION AND GROWTH



## 2. TRAFFIC CHARACTERISTICS (BY DIRECTION)

Parameter	All - Day	Mon. - Fri.	Sat.	Sun.
<b>EAST BOUND</b>				
A.A.D.T.	15430	16050	15540	13190
R 12 / 24 - %	70.5	71.5	69	66
R 16 / 24 - %	87	87.7	86	83.9
AM Peak Hour	0900-1000	0800-0900	0800-0900	0900-1000
One-way flow at AM peak hour	920	1030	860	630
T - % (AM)	-	-	-	-
PM Peak Hour	1700-1800	1600-1700	1700-1800	1600-1700
One-way flow at PM peak hour	980	1030	1030	840
T - % (PM)	-	-	-	-
Prop.of commercial vehicles - 16 hr.	-	-	-	-
<b>WEST BOUND</b>				
A.A.D.T.	19100	19740	20080	16050
R 12 / 24 - %	71.1	72.3	69.5	65.6
R 16 / 24 - %	87.9	88.7	87.3	84
AM Peak Hour	0900-1000	0900-1000	0900-1000	0900-1000
One-way flow at AM peak hour	1130	1220	1130	770
T - % (AM)	-	-	-	-
PM Peak Hour	1800-1900	1800-1900	1700-1800	1600-1700
One-way flow at PM peak hour	1370	1510	1290	970
T - % (PM)	-	-	-	-
Prop.of commercial vehicles - 16 hr.	-	-	-	-

## 3. OTHER INFORMATION AND COMMENT